



COMPANY INC.

solving your wire stitching needs for 125 years...

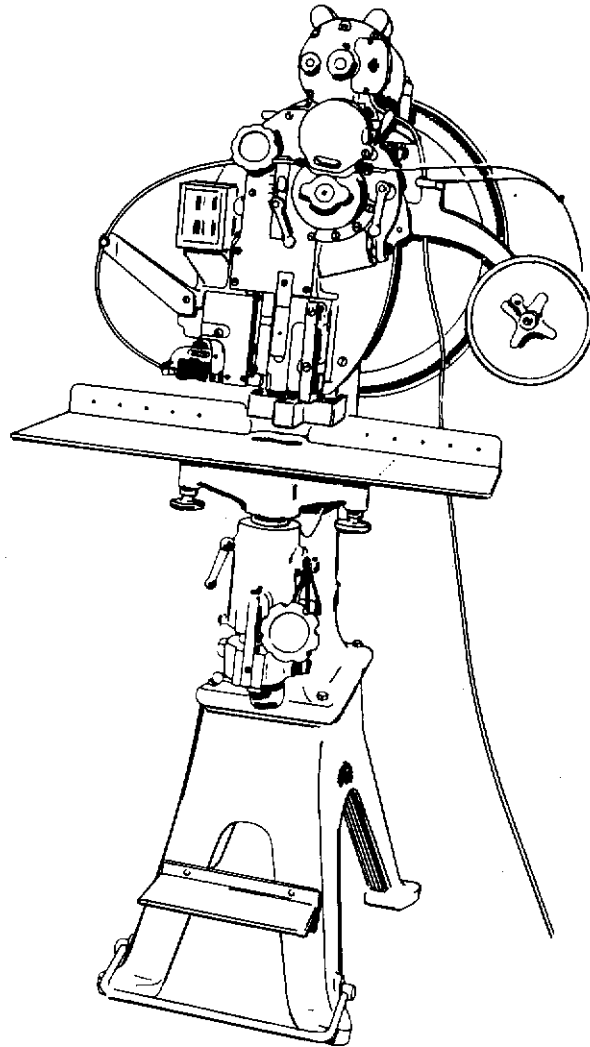
ISP Stitching & Bindery Products

**OWNERS
MANUAL**

**MODEL N3B
BOOK STITCHER**

**MODELS: N3B2
N3B2¹/₂**

ACME-MORRISON N3D



Section 1 SAFETY PRECAUTIONS And PROCEDURES

SAFETY PRECAUTIONS And PROCEDURES

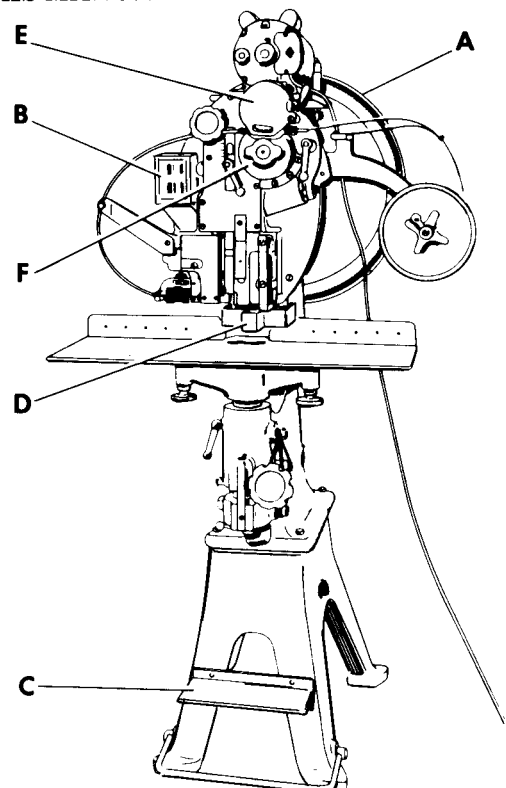
1. Make sure electrical power is turned off before performing any adjustment or maintenance.
2. Keep hands, tools and clothing clear of stitching area.
3. Become familiar with the moving components of your machine. Keep fingers away from areas that could pinch or cut.
4. Wear adequate safety equipment for eye and face protection. Observe your plant safety rules.
5. Exert "good housekeeping" in your work area. Keep it as clean and as uncluttered as possible.
6. A well maintained machine is a safer machine. Clean and lubricate the machine at regular intervals. Check machine daily for broken or worn parts. Replace as necessary. DO NOT attempt to operate the machine if a part is broken.
7. Route all electrical cables away from pedestrian and transportation lanes.
8. See "Safety Guards" information. It points out areas where additional caution should be exercised. If you are unsure how to safely operate or maintain your Stitcher, contact your Interlake Service Representative.

SAFETY GUARDS

NOTE

FOR ILLUSTRATIONAL CLARITY, SAFETY GUARDS ARE NOT SHOWN IN OTHER ILLUSTRATIONS IN THIS MANUAL.

- A. PINION GUARD (C-8137-F) & DRIVE WHEEL GUARD (B-6158-F) – This guard covers a revolving part. Do not operate machine unless this guard is properly in place. Keep hands, clothing and tools clear when machine is in operation or hand-wheel is used to cycle machine.
- B. L.V.P. SWITCH (CB-285-C2) – On-off switch provides low voltage protection. The motor is prevented from automatically re-starting if electrical power is interrupted.
- C. FOOT PEDAL GUARD (CB-2103-A or CD-2326) – This guard safeguards against accidental actuation of machine. DO NOT remove.
- D. FINGER GUARD (CB-2113-B) – This guard helps to prevent the operator's fingers from entering a pinch point area. Never put fingers under this guard.
- E. IDLER GEAR GUARD (C-8077-F) – This guard covers moving parts that could pinch or cut. Do not operate machine unless this guard is properly in place.
- F. WIRE FEED GEAR GUARD (C-8229-F) – This guard covers revolving gears. Do not operate machine unless this guard is properly in place. Keep hands, clothing and tools clear when machine is in operation.



WARNING

NEVER PUT FINGERS UNDER FINGER GUARD.

ISP Stitching & Bindery Products

N3B ACME-MORRISON BOOK STITCHER

The current Heavy Duty Book Stitcher is our Model N3B. Use the same corresponding part number when ordering parts for the obsoleted Morrison 12Z and Seybold Morrison SCA and SCB. Parts for both the 2 and 2½ Models are listed herein. **NOTE: DO NOT ORDER** Parts for the old Morrison No. 12 Model from this manual.

When ordering parts for the N3B 1½ Acme-Morrison Book Stitcher, use the part numbers given for the model N3B 2.

Please mention the following Model and Serial Number in all correspondence with Sales and Service Office. Also state Wire Size and Stitch Width.

Model..... Wire Size

Serial No..... Stitch Width.....

OPERATING INSTRUCTIONS

Page 4	Preliminary Installation Instructions
Page 5	Detailed Installation Instructions
Page 6	Lubrication Instructions
Page 7	Maintenance Instructions and Adjustments
	Wire Cutoff
	Even Leg Length
	Mandrel Adjustment
	Clincher Adjustment

PARTS LIST

Pages 8-9	General Parts List
Pages 10-11	General Parts List—Compressor
Pages 12-13	Cutter Block—Front Block—Clincher Box
Pages 14-15	Face Plate—Front View
Pages 16-17	Face Plate—Rear View
Pages 18-19	Cam—Shaft—Clutch—Brake
Pages 20-23	Parts List for Model N3D

**PRELIMINARY INSTRUCTIONS FOR INSTALLING
MODEL N3B ACME-MORRISON BOOK STITCHER**

Model N3B R ¼" to 1¾" Capacity*

For use with No. 17 and 18 x 20 High
Carbon Book Binders Wire.

Model N3B H ½" to 2" Capacity*

CLEANING

For protection, all parts have been coated with a rust preventative. Remove with a lint free rag soaked in an oil-based solvent taking precaution that slush is not washed into oil holes and bearings.

POWER SOURCE

Check data on motor nameplate. Operate only when this corresponds to your power characteristics.

ELECTRICAL WIRING

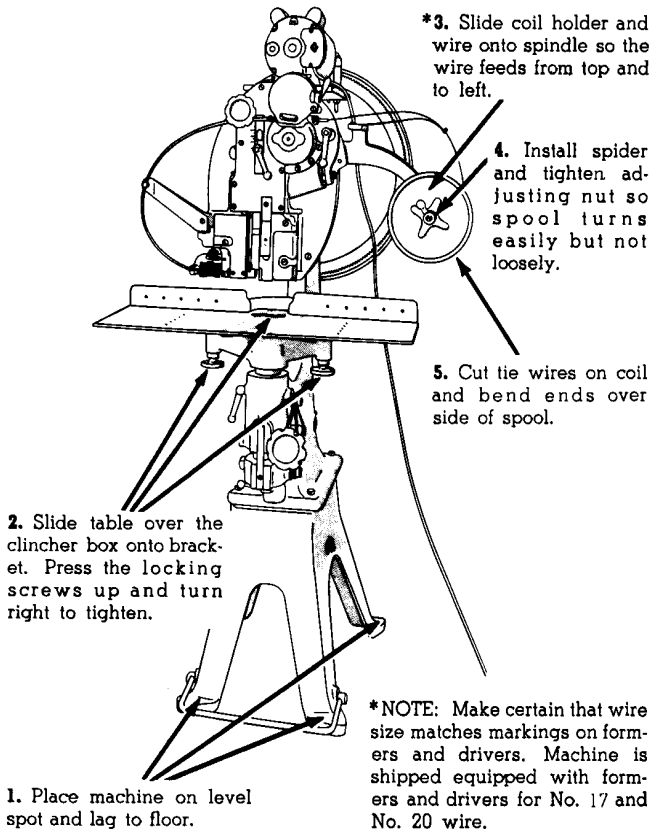
The motor is complete with overload protection. In case of single phase wiring the cord and plug are furnished. If wired for two or three phase, a line must be run to the starter.

FOLLOW DETAILED INSTALLATION INSTRUCTIONS ON FOLLOWING PAGE CAREFULLY

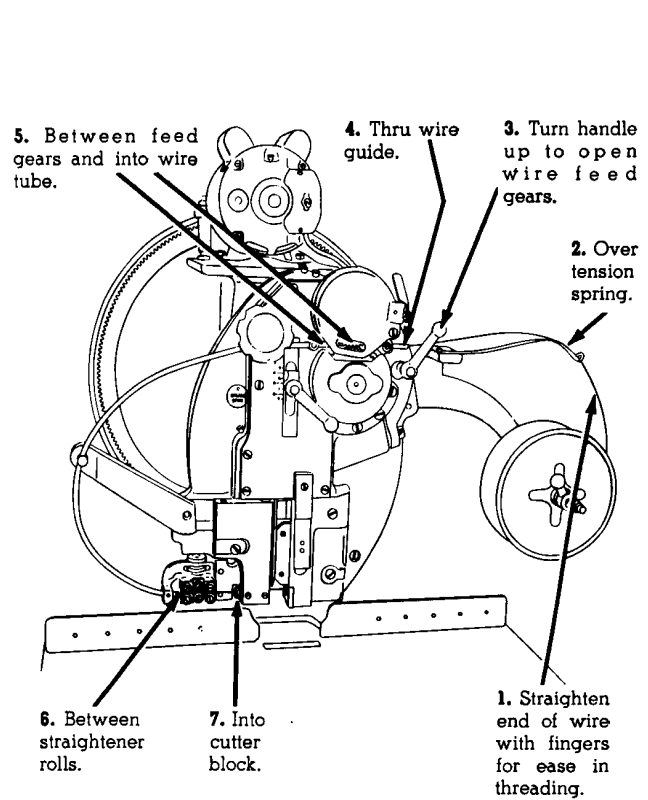
*Capacity is dependent on type, consistency, coating, and weight of paper. Interlake recommends samples of product are submitted before purchasing this machine.

MODEL N3B ACME-MORRISON BOOK STITCHER

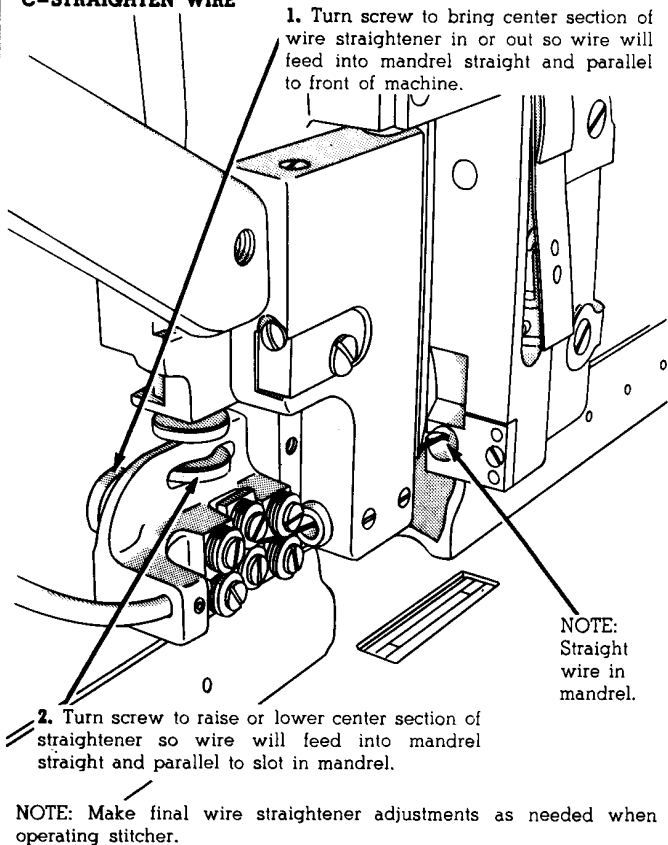
A-INSTALL TABLE AND COIL HOLDER



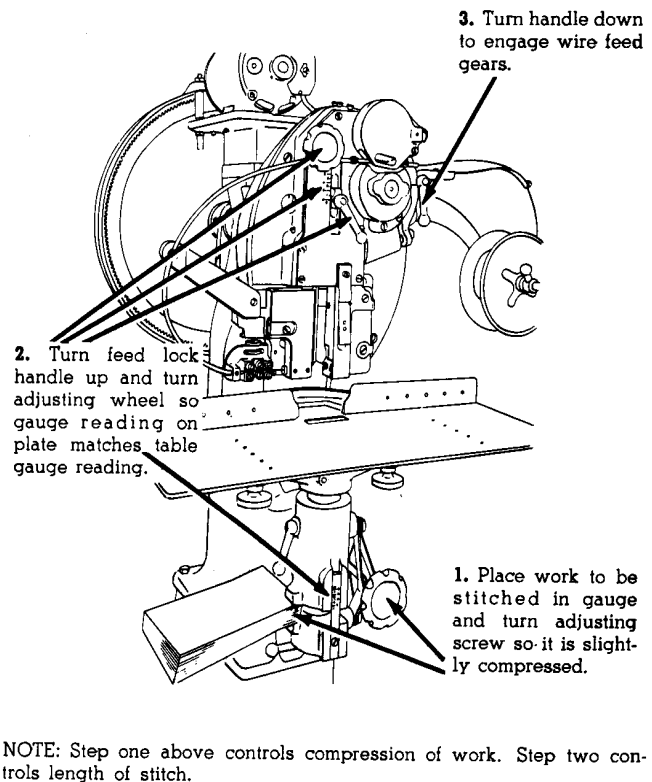
B-THREAD WIRE



C-STRAIGHTEN WIRE



D-ADJUST FOR THICKNESS OF WORK

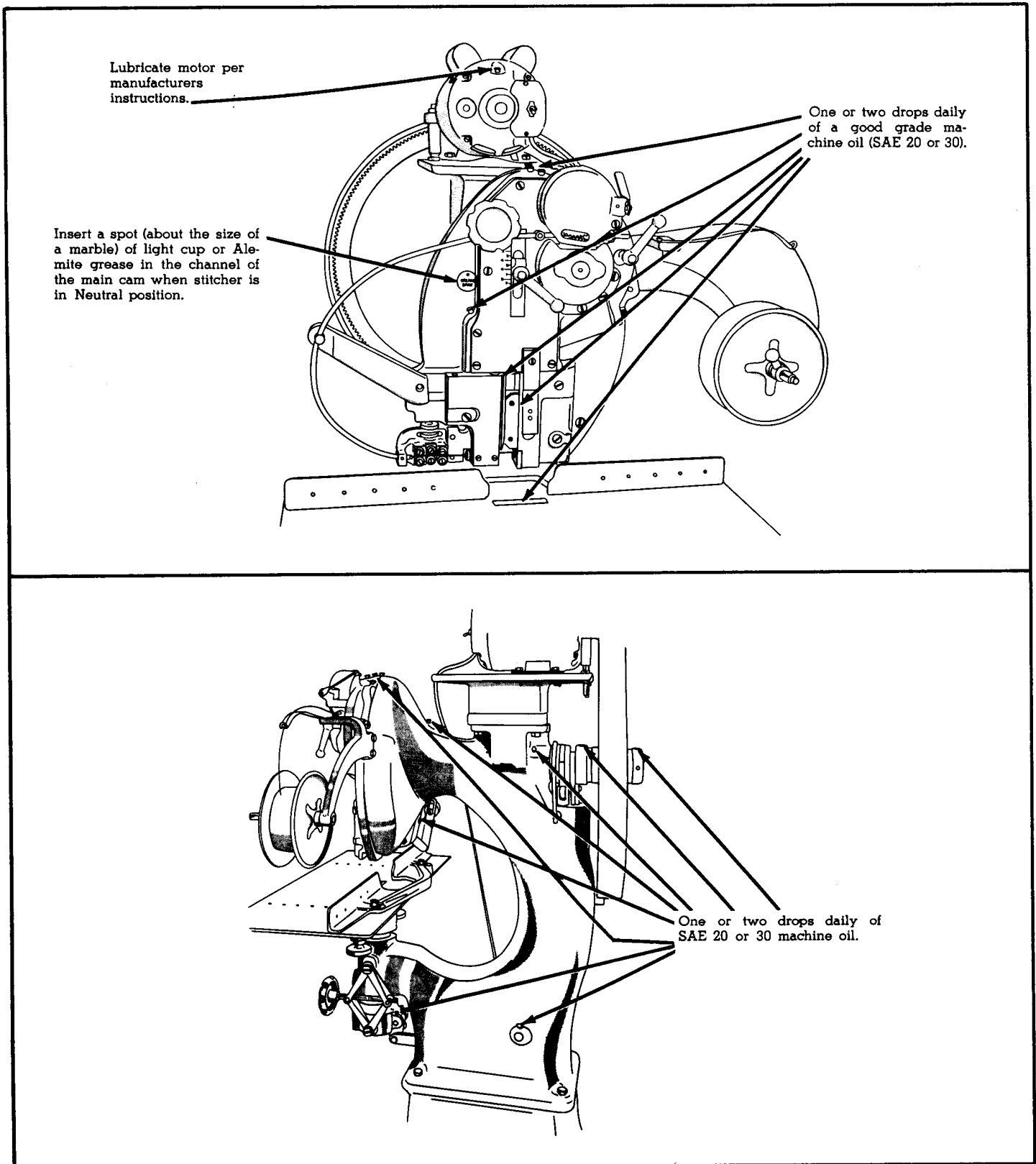


After completing steps outlined above, check available power sources against readings on motor nameplate. To operate stitcher press hand switch to "on" position; place the work to be stitched on table under head. Press down on trip rod with foot and release. CAUTION: Stitcher will continue to stitch as long as trip rod is held down.

LUBRICATION

CAUTION: Never operate this machine until you are sure it has been thoroughly lubricated.

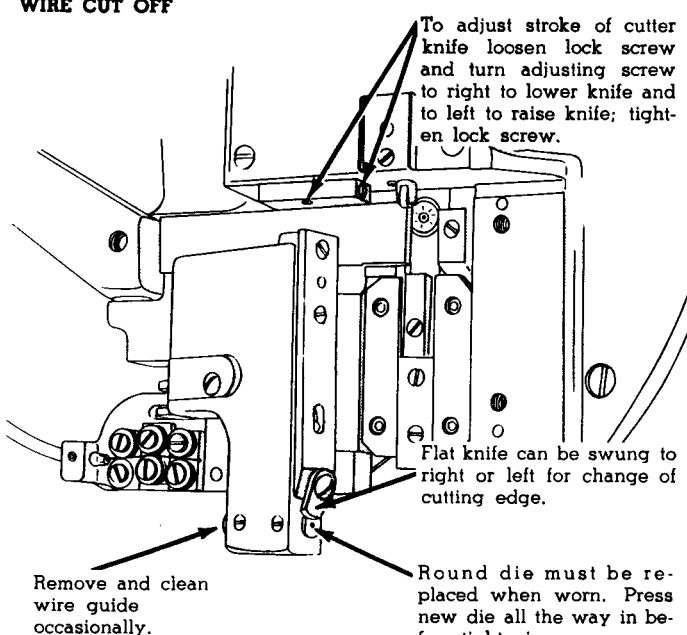
If in constant use, the machine should be lubricated daily. Oiling at the end of the day will permit oil to flow over all parts and wiping excess from formers and drivers before starting the next day will prevent ruining books or material being stitched. All oil cups and oil holes are plainly marked in red.



MAINTENANCE INSTRUCTIONS AND ADJUSTMENTS

MAKE ADJUSTMENTS WITH MACHINE IN NEUTRAL POSITION. Turn main drive gear by hand in clockwise direction indicated by arrow on gear until gear disengages from clutch hub and shaft. After repairs or adjustments are made and **BEFORE TURNING ON POWER**, always step on foot pedal and turn main drive gear by hand to form a stitch and return the machine to neutral position.

WIRE CUT OFF



To adjust stroke of cutter knife loosen lock screw and turn adjusting screw to right to lower knife and to left to raise knife; tighten lock screw.

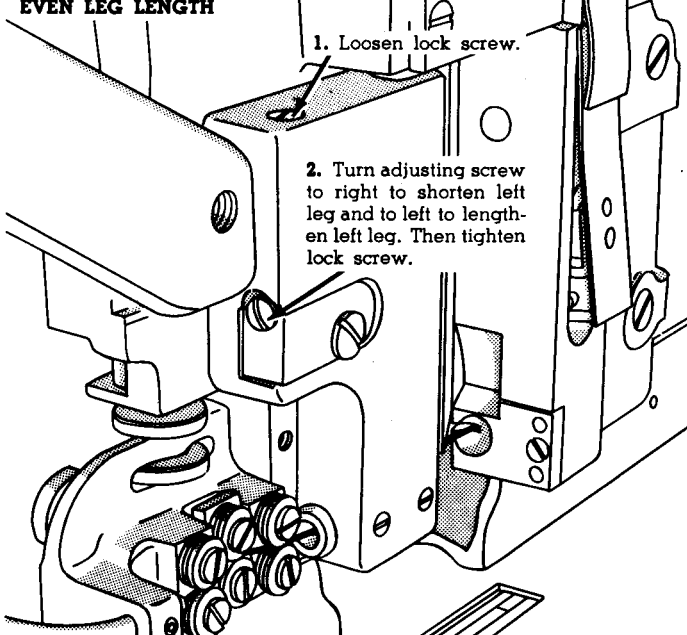
Flat knife can be swung to right or left for change of cutting edge.

Remove and clean wire guide occasionally.

Round die must be replaced when worn. Press new die all the way in before tightening screw.

NOTE: A burr on end of wire will deflect legs of stitch preventing their clinching, or will cause wire to buckle when entering mandrel.

EVEN LEG LENGTH

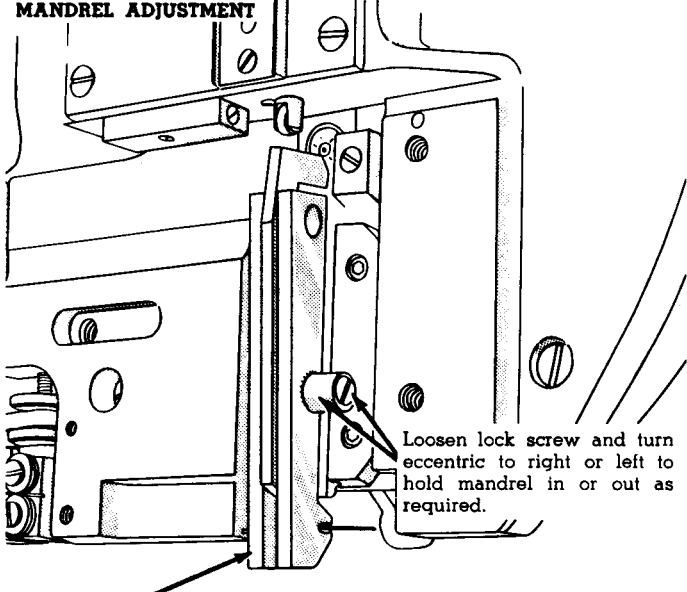


1. Loosen lock screw.

2. Turn adjusting screw to right to shorten left leg and to left to lengthen left leg. Then tighten lock screw.

NOTE: A staple formed with uneven leg lengths will not penetrate straight, nor will it clinch properly under the work.

MANDREL ADJUSTMENT

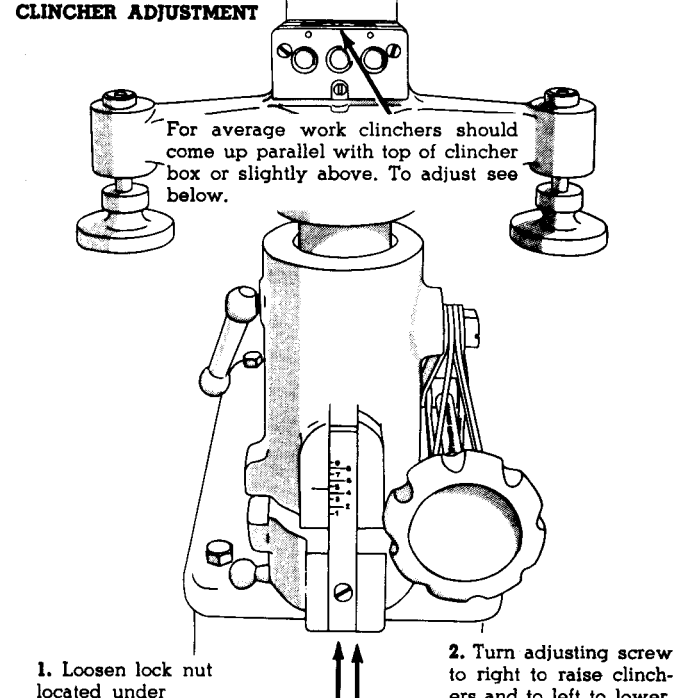


Loosen lock screw and turn eccentric to right or left to hold mandrel in or out as required.

The mandrel must hold the wire directly below grooves in formers or legs of the stitch will break off.

To check adjustments depress trip rod and turn drive gear by hand slowly while watching the action of mandrel. The front block assembly must be removed to adjust mandrel.

CLINCHER ADJUSTMENT



For average work clinchers should come up parallel with top of clincher box or slightly above. To adjust see below.

1. Loosen lock nut located under spindle.

2. Turn adjusting screw to right to raise clinchers and to left to lower. Then tighten lock nut.

ORDER SPARE PARTS FROM LISTS ON FOLLOWING PAGES

Locate parts required by selecting nearest index number on the photographs to the part required. Refer to listing by index number and order by giving number of pieces required, part number, part name, model and serial number of stitcher.

EXAMPLE: 1-D-31842 Flat Knife for N3B2½ Stitcher #12348

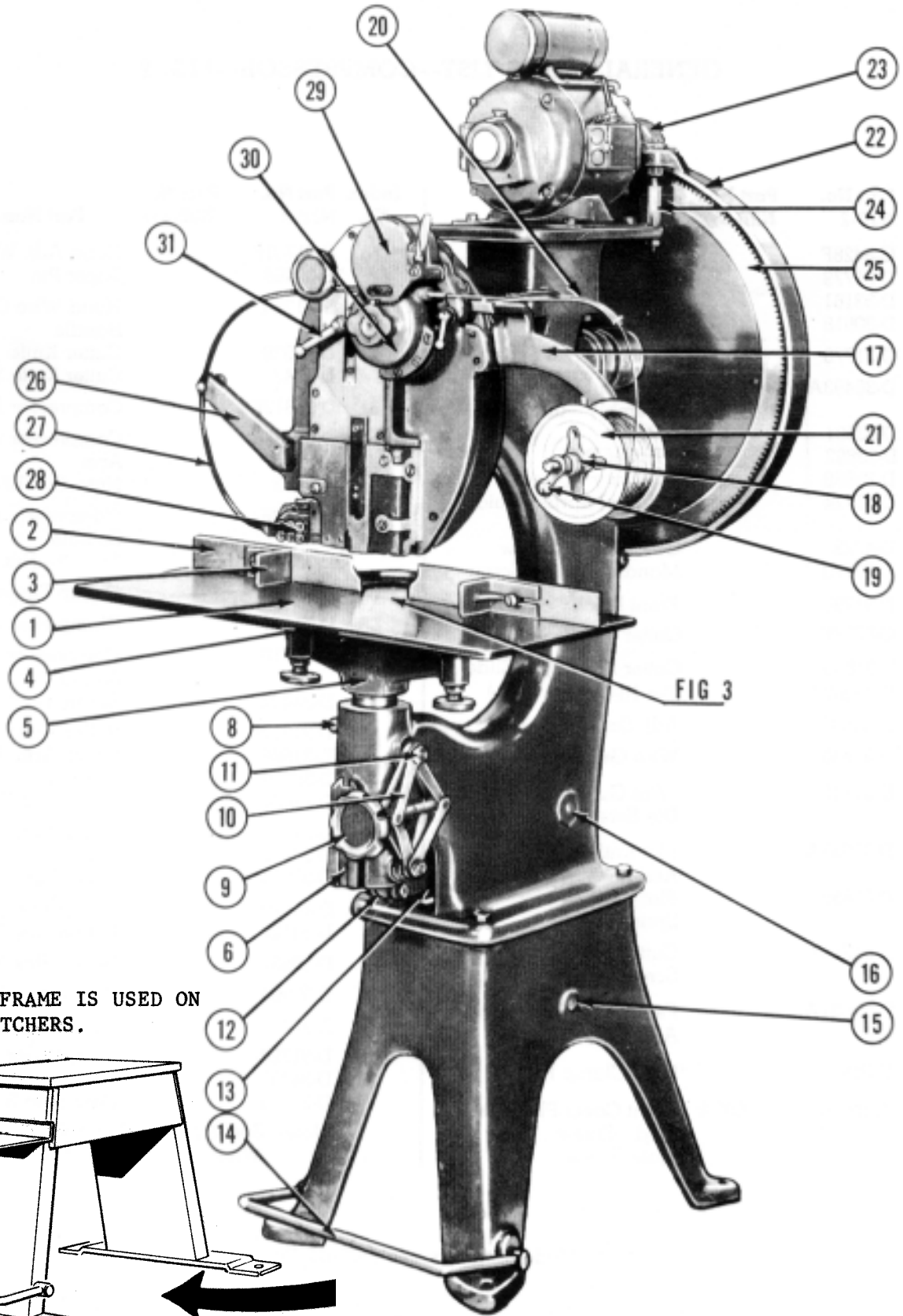
Where part numbers are not shown in N3B2½ column use numbers in N3B2 column as they are identical.

GENERAL PARTS LIST—FIG. 1

Index No.	Part No. N3B-2	Part No. N3B-2½	Part Name	Index No.	Part No. N3B-2	Part No. N3B-2½	Part Name
1	C-8171		Table (Assy B-6933-A)	16	C-8231-F		Inner Bell Crank
2	C-8049F		Table Back Gauge		D-31723		Inner Bell Crank Pin
	D-37725		Table Back Gauge Screw		D-33881		Crank Pin Screw
3	D-30184F		Table Side Gauge, L.H.		D-37212A		Vertical Clincher Bar Assby
	CD-2665		Table Side Gauge, R.H.	17	B-6856A		Wire Spool Bracket Assby (Includes)
	D-37725		Table Side Gauge Screw				Spindle & Rear Spider Assby
4	B-6781F		Table Bracket		D-33916		Attaching Screw
	D-5042		Table Screw	18	D-31051A	SEE	Front Spider Assby
5	C-8895A	C-8896A	Table Support Bar Assby	19	D-30022F	CDDD	Spool Retaining Nut
	CB-835-H		Roll Pin	20	D-37032A	23-G2	Wire Guide Spring Assby
6	D-30179F	D-31886F	Table Raising Spindle		D-36380		Attaching Screw
	D-33896-F		Wire Draw Index	21	D-33103		5-lb. Spool
	D-30897		Wire Draw Index Screw	22	B-6158-F		Drive Gear Guard
8	D-33854		Table Lock Screw		D-33869		Guard Lower Screw
	D-33853		Table Lock Handle	23	C-8137-F		Pinion Guard
	*D-30471		Taper Pin		D-30607		Pinion Guard Screw
9	D-31685	D-31867	Table Adj. Screw		C-22966-F		Motor Pinion—19 Teeth
	D-32245		Table Adj. Screw Wheel	24	D-31909		Guard Support Stud
	*D-30874		Table Adj. Screw Pin		D-32977		Nut
10	D-31837	D-31861	Toggle Link	25	B-6279-F		Drive Gear
	D-31836		Link Bushing—R.H. Thread	26	C 8047-F	C-8050-F	Wire Tube Bracket
	D-31815		Link Bushing—L.H. Thread		D-3059	D-3144	Attaching Screw
11	D-33729		Link Screw		D-31829		Tube Holder Screw
12	D-30126F		Outer Bell Crank		D-30537		Tube Holder Screw Nut
	D-30076		Bell Crank Pivot Pin	27	C-9153	D-35571	Wire Tube
	D-36454-F		Bell Crank Handle	28	C-8228-F		Wire Straightener Body
	D-30541		Bell Crank Handle Nut		D-31851		Roller Stud
	D-30508		Bell Crank Screw		D-31721	SEE	Adj. Plunger
	D-30204-F		Clincher Adj. Screw		D-31720	CDD-2310	Handle
	D-5894		Clincher Adj. Screw Nut		D-31719	FOR	Lock Nut
	D-33201		Clincher Pushrod		D-31718	FLAT	Horizontal Adj. Screw
	D-30039		Clincher Pushrod Pin		D-31716	WIRE	Vertical Nut
	D-30481-F		Clincher Spring		D-31835		Block Screw
13	D-37210A		Horizontal Clincher Bar Assby		D-33893		Adj. Slide Block
14	D-33839		Foot Treadle		D-31834		Roller
	*D-30471		Taper Pin		D-22872		Set Screw
	D-31742		Foot Treadle Stud—Left		D-3051		Attaching Screw
	D-31741		Foot Treadle Stud—Right	29	C-8077-F		Idler Gear Guard
	D-37208A		Trip Stud Crank Assby		D-30607		Upper Attaching Screw
	C-8359		Lower Connecting Bar		D-33876		Lower Attaching Screw
15	D-31888		Trip Connecting Lever Pin	30	C-8488-F	C-8229-F	Feed Gear Guard
	C-8894A		Lever Assembly		D-31724	D-35994	Gear Guard Pin
	C-8133		Upper Conn. Bar		D-31733	D-31418	Gear Guard Screw
	D-33855		Trip Spring		D-31715		Wire Tube Screw
					D-31731		Upper Wire Tube
					D-31807		Feed Clutch Brake
					D-31808		Feed Clutch Spring
				31	CN-30		Feed Lock Handle
					D-33712		Handle Screw
					*D-30471		Handle Taper Pin
					D-31601		Washer

*Late Model Stitches use D-37929 Roll Pin.

ISP Stitching & Bindery Products



FABRICATED FRAME IS USED ON ALL NEW STITCHERS.

FIG. 1—GENERAL

GENERAL PARTS LIST—COMPRESSOR—FIG. 2

Index No.	Part No. N3B-2	Part No. N3B-2½	Part Name	Index No.	Part No. N3B-2	Part No. N3B-2½	Part Name
32	C-8428F D-31779 D-33161 D-30618		Front Block Wire Guide Pin Guide Screw	56	D-31701F *D-30468		Hand Adj. Wheel Taper Pin
34	D-31778		Mandrel Pivot Screw	58	D-31264		Hand Wire Cutter Handle
35	D-36493A D-33891 D-33892 D-33888 D-31774 D-4722 D-31773		Mandrel Spring Assembly—(Includes) Roller Roller Pin Auxiliary Spring Mandrel Spring Guide Block Guide Block Screw Mandrel Spring Screw		D-30099 D-30421		Cutter Knife Cutter Knife Screw
36	D-31418		Front Block Screw	61	D-31819F		Compressor Bracket
40	C-8227F		Cutter Block	63	D-31736F		Compressor Operating Arm
41	D-31855 D-48967-F		Cutter Block Adj. Slide (For Hi-Carbon Wire)		D-5573		Nut—½—13
42	D-30593		Adj. Screw	64	D-34426		Compressor Bracket Spindle
44	D-31860		Wire Guide		D-36314		¾—10—Nut
45	D-31749		Wire Guide and Rd. Die Screw	65	B-6143F		Clamp Finger Holder
48	D-37033A D-31859		Flat Knife Holder Assembly Flat Knife Holder Spring	66	D-34428		Clamp Finger
51	D-31754		Cutter Block Attaching Screw	67	D-31710		Compressor Raising Spring Spring Stud
53	D-37031A		Feed Drive Gear Assembly		D-34432		Roller Arm Roller Arm Bushing Washer
54	D-31812		Lock Clamp Plate	68	D-31714F D-31686 D-30699 D-33604		½—13 x 2 Cap Screw
55	C-8899A D-31715 D-30897	C-8900A	Front Cover Plate Assby Stud—Screw Plate Screw	69	D-31688 D-34425 D-36224		Roller Arm Stud Roller Cotter Pin
				70	D-34429 D-34427		Connecting Bar Connecting Bar Stud
				71	D-30531		¾—11 Hex Nut
				72	D-30964		Connecting Bar Spring
				73	D-34430		Connecting Bar Block
				74	D-31794F D-34431 D-31743		Compressor Cam Compressor Cam Ring Cam Ring Screw

REPLACE
WITH
CDD 3019 &
CD2384

Note—See #142 for Clutch Collar
When Compressor Is Not Used.

*Late Model Stitchers use D-37912 Roll Pin.

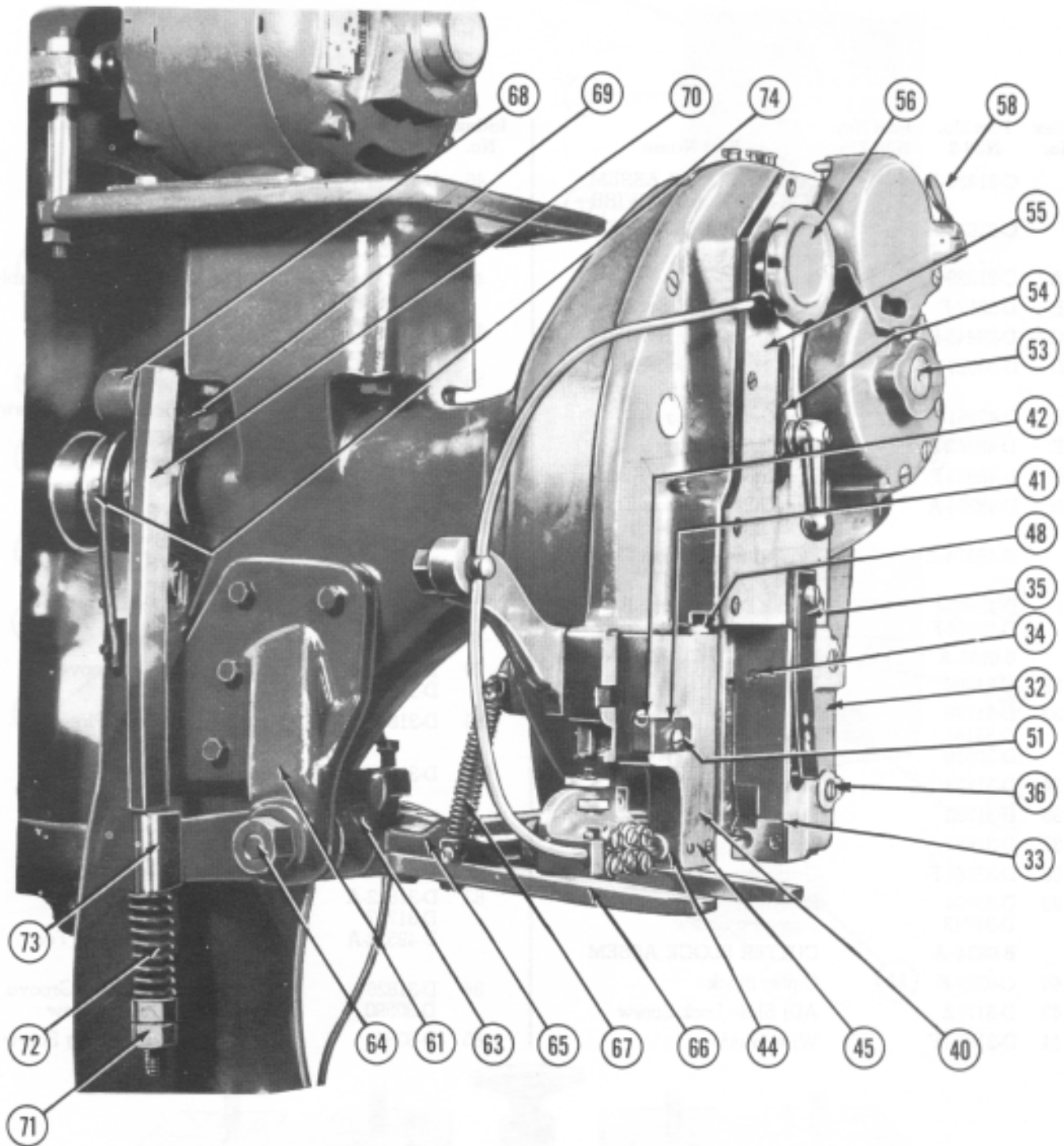


FIG. 2—GENERAL—BOOK COMPRESSOR

**LIST OF PARTS FOR FRONT BLOCK,
CUTTER BLOCK, AND CLINCHER BOX—FIG. 3**

Index No.	Part No. N3B-2	Part No. N3B-2½	Part Name	Index No.	Part No. N3B-2	Part No. N3B-2½	Part Name
	C-21330-A		CUTTER BLOCK ASSEM. FOR #18 ROUND WIRE	46	D-31838		Round Die
	C-21622-A		CUTTER BLOCK ASSEM. FOR FLAT B.B. WIRE	47	D-31842		Flat Knife
A	C-21329-F		Cutter Block		D-31751		Flat Knife Bushing
B	D-5252-F		¼—20 x ¼" Lg. Set Screw		D-31750		Flat Knife Screw
C	D-29845-F		⅛ Dia. x ¾" Lg. Roll Pin	48	D-37033-A		Flat Knife Holder Assembly
D	D-30523-F		8/32 x ½" Lg. Soc. Hd. Cap Screw		D-31859		Flat Knife Holder Spring
E	D-48961-F		Flat Knife Spring	49	D-31755		Cutter Block Key
F	D-48962-F		Flat Knife Plunger		D-30501		Key Screw
G	D-48963-F		Flat Knife Retainer Plate	50	D-33881		Knife Holder Stop Screw
H	D-48964-A		Flat Knife—Carbon Tipped for Flat B.B. Wire	51	D-31754		Cutter Block Attach. Screw
	D-48974-A		Flat Knife—Carbon Tipped for #18				CLINCHER BOX
J	D-48965-F		Round Die for Flat B.B. Wire	75	D-31846		Clincher Back Plate—3 Groove
	D-48966-F		Round Die for #18	76	D-31825		Clincher Front Plate—3 Groove
	B-6935-A		FRONT BLOCK ASSEMBLY	77	D-31850		Clincher Side Piece—3 Groove
32	C-8428-F		Front Block		D-30627		Pin
33	D-31779		Wire Guide	78	D-31674		Binding Screw
	D-33161		Pin	79	D-38458-A		Clincher—3 Groove
	D-30618		Guide Screw		D-31707		Clincher Pin
34	D-31778		Mandrel Pivot Screw	80	D-31847		Clincher Back Plate—1 Groove
36	D-31780		Front Block Attach. Screw	81	D-31827		Clincher Front Plate—1 Groove
37	D-31884		Mandrel	82	D-31849		Clincher Side Piece—1 Groove
38	D-33181-F		Gripper		D-30627		Clincher Side Piece Pin
39	D-62823-F	SEE B-6935-A	Eccentric	83	D-31822-A		Clincher—1 Groove
	D-62825-F		Eccentric Screw		D-31707		Clincher Pin
			SEE INSET FOR LATE MODELS		D-49522-A		Clincher, Flat Top, For Hi-Carbon Wire
	B-6934-A		CUTTER BLOCK ASSEM.	84	D-31826		Clincher Lifter—1 Groove
40	C-8227-F		Cutter Block		CB-622-A		Clincher Lifter Screw
43	D-31752		ADJ Slide Lock Screw	85	D-30865		Clincher Attaching Screw
44	D-31860-F		Wire Guide				

ISP Stitching & Bindery Products

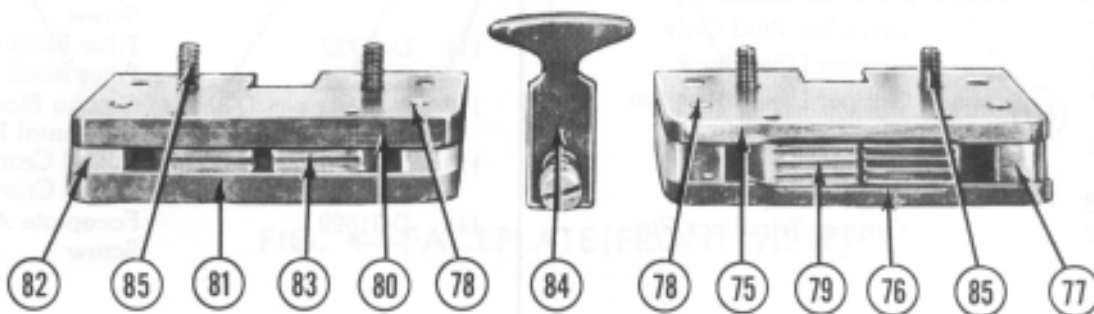
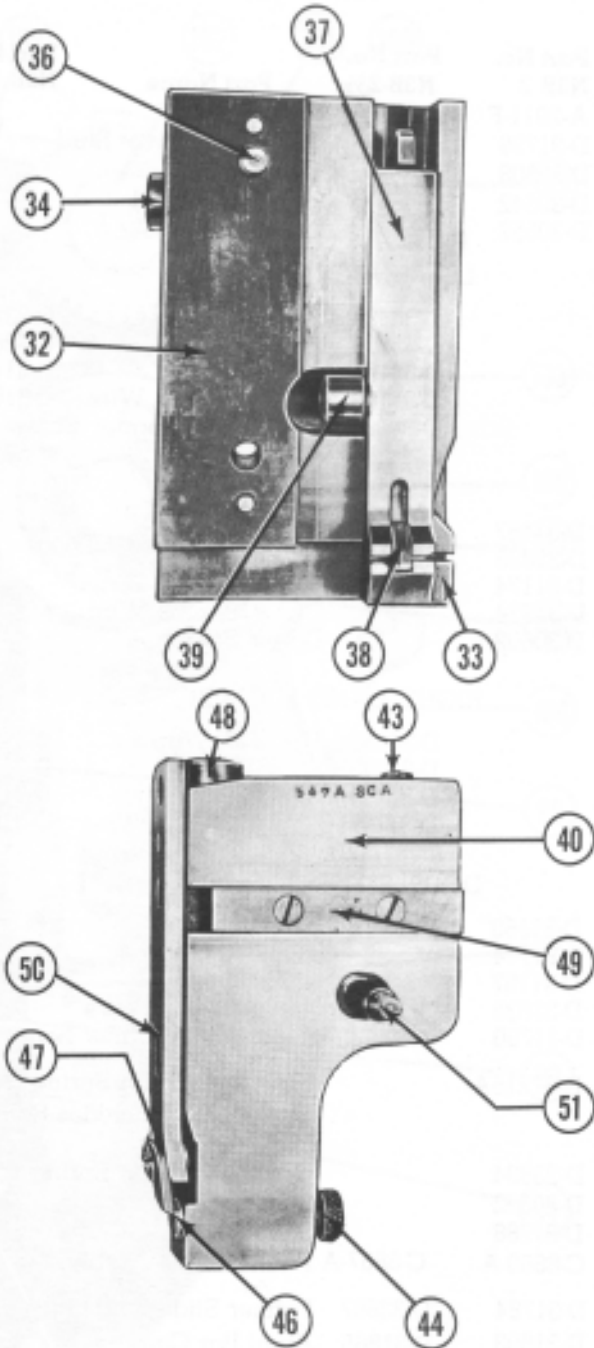
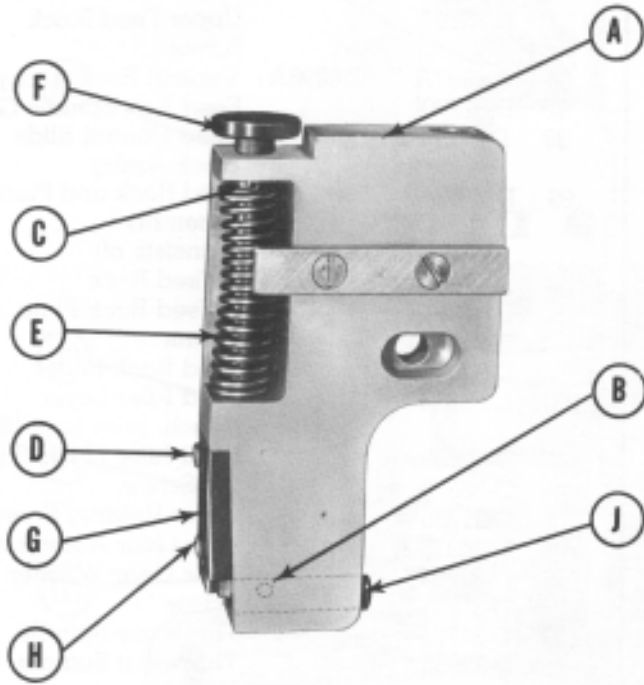
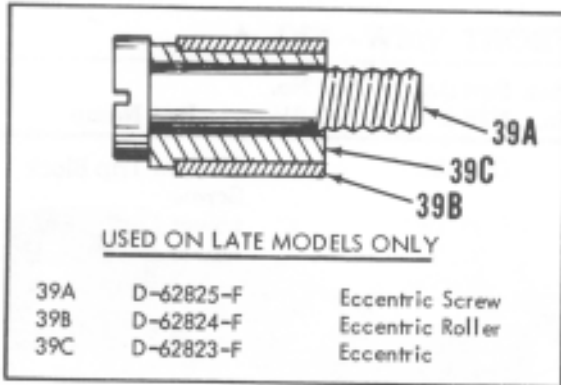


FIG. 3—FRONT BLOCK—CUTTER BLOCK
CLINCHER BOX

PARTS LIST FOR FACE PLATE—FRONT VIEW—FIG. 4

Index No.	Part No. N3B-2	Part No. N3B-2½	Part Name	Part No. N3B-1½	Index No.	Part No. N3B-2	Part No. N3B-2½	Part Name
86	A-2011-F D-31729 D-30608 D-30542 D-30552	A-2016-F	Face Plate Idler Lever Pivot Stud Dowel Pin Gits Oiler #301 Gits Oiler #302			D-30501		Gripper Trip Block Screw
			LEFT HAND FORMER			D-33689 D-31396 D-30897		Lower Feed Block Lower Feed Block Pin Lower Feed Block Screw
87		D-36484 D-33803 D-33422 D-31189 CD-2298	For #17 Wire " #18 " " #20 " " #18 x 20 Wire Single End Former Screw	D-33258 D-33691 D-31156 D-31033		D-31782 D-31396 D-30897	D-31864	Upper Feed Block Upper Feed Block Pin Upper Feed Block Screw
			DRIVER			96 97 98	C-8897A D-31770 D-37214A	C-8898A Vertical Rack Assby Feed Adj. Spindle Gear Feed Control Slide Block Assby
88	D-31167 D-31038 D-31174 D-31034 D-30602		For #17 Wire " #18 " " #20 " " #18 x 20 Wire Driver Screw			99	D-37034-A	Feed Rack and Plate Assembly (Consists of) Feed Rack Plate Feed Rack Pins Feed Rack Roller Feed Idler Lever
			RIGHT HAND FORMER			100	C-8522-F	(Mach. prior to #12034) Feed Idler Lever Stud Set Screw Lever Holding Screw Idler Gear Idler Gear Washer Screw
89		D-36483 D-31023 D-33421 D-31197	For #17 Wire " #18 " " #20 " " #18 x 20 Wire	D-33259 D-31143 D-31173 D-31032			D-31800 D-31811 D-30874 D-31805	Feed Rack Plate Feed Rack Pins Feed Rack Roller Feed Idler Lever
			DOUBLE END FORMER				C-8078	(Mach. prior to #12034) Feed Idler Lever Stud Set Screw Lever Holding Screw Idler Gear Idler Gear Washer Screw
89	D-31168 D-31144 D-31157 D-31035 D-11790		For #17 Wire " #18 " " #20 " " #18 x 20 Wire Double End Former Screw			101 102	D-37035-F D-31804 D-30897	Feed Idler Lever Stud Set Screw Lever Holding Screw Idler Gear Idler Gear Washer Screw
90	D-37215A		Gripper Tension Spring Stud Assby (Includes Roller and Pin)			103	D-31725 CN-30	Throw-out Spindle Throw-out Spindle Handle Taper Pin
	D-33884 CD-2289		Gripper Tension Spring Stud Lock Screw				*D-30471	Tension Spring
91	D-31788		Shoe			104	D-33887 D-31735 D-31732	Tension Plunger Tension Adj. Screw
92	C-8869-A	C-8867-A	Former Slide Assby.			105	D-37036-A	Clutch Spider Assembly
119	D-31784	D-33897	Former Slide Stud Only			106	D-30625	Clutch Roller
94	D-31693 D-30865	D-31865	Anvil Bar Cam Screw			107	D-30440	Clutch Roller Spring
95	C-8873-A D-31783	C-8868-A	Drive Bar Assembly Drive Bar Stud Only			108	D-30106	Clutch Ring
93	D-33873 D-31747 D-30501		Gripper Lifter Block Gripper Lifter Block Pin Gripper Lifter Block Screw			109	D-30542	Gits Oiler
	D-31748 D-30627		Gripper Trip Block Gripper Trip Block Pin			110	D-31769 D-31768 D-33881	D-31862 Cut Off Block Trip Slide Slide Adj. Screw Slide Adj. Screw Lock Screw
			DOUBLE END FORMER			111	D-31722 D-31761	Tilter Block Tilter Block Pin
			DRIVER			112	D-38501	D-31453 Cutting Block Horizontal Rack
			RIGHT HAND FORMER			113	D-31816 D-31810	D-37012-A Assembly Cut-off Crank Spindle Cut-off Crank Arm
			DOUBLE END FORMER			114	D-31699	Faceplate Attaching Screw

REPLACE WITH CDD3019 & CD2384

*Late Model Stitchers use D-37929 Roll Pin.

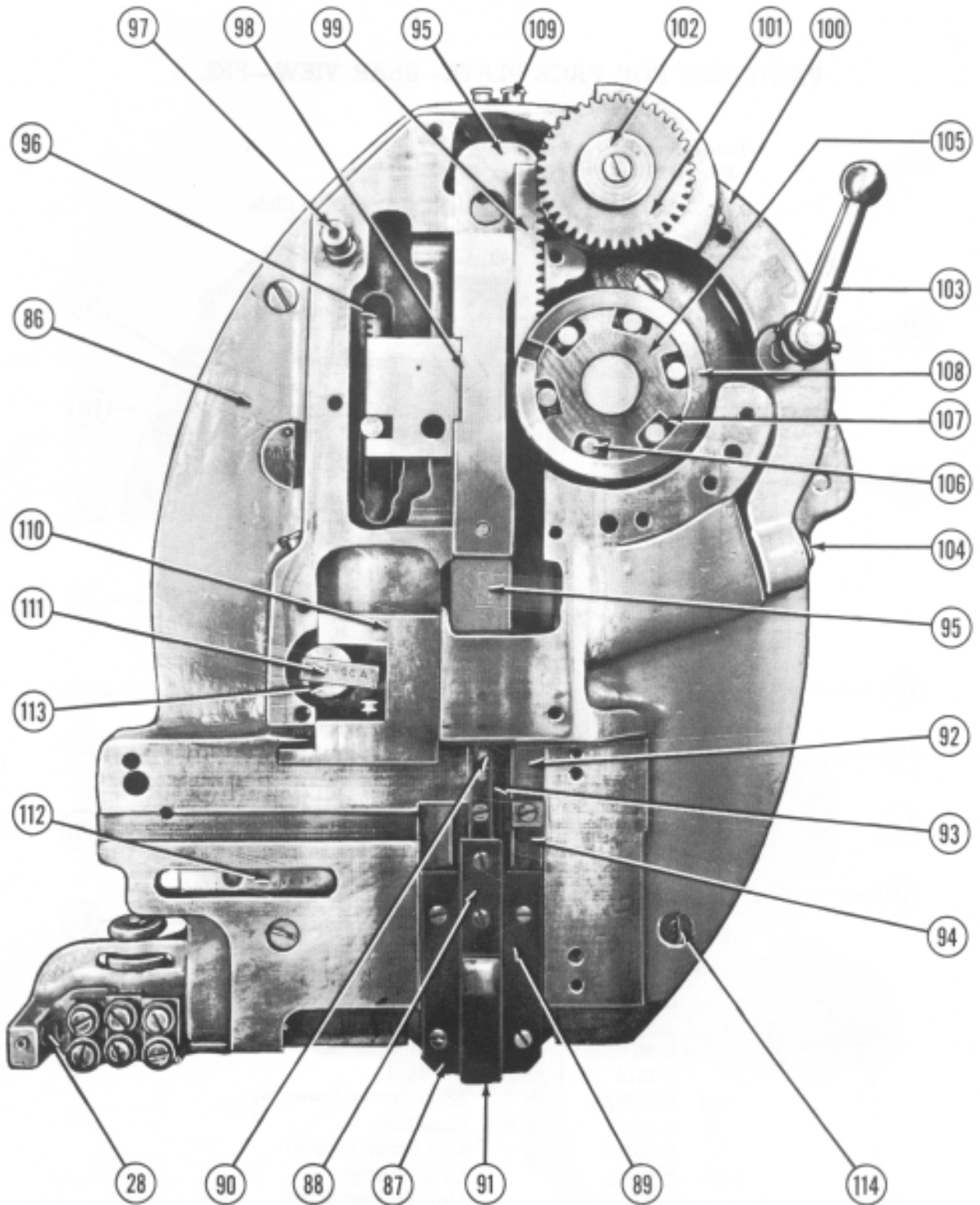


FIG. 4—FACEPLATE (FRONT VIEW)

PARTS LIST FOR FACE PLATE—REAR VIEW—FIG. 5

Index No.	Part No. N3B-2	Part No. N3B-2½	Part Name
115	D-33902-F		Lower Left Former Slide Plate
123	D-31775	D-33349	Gear Stud
	D-30541		Gear Stud Nut
116	D-31776		Upper Left Former Slide Plate
117	D-31785		Upper Right Former Slide Plate
118	D-31786		Lower Right Former Slide Plate
	D-30897		Plate Attaching Screws
	D-13706		Plate Dowel Pins
119	D-31784	D-33897	Former Slide Stud
120	D-31839		Cam Roller
121	D-31734		Wire Feed Throwout Screw
	D-30541		Nut
122	D-37037A		Connecting Link
124	D-36982A	D-37213A	Cutting Block Ring Gear Assembly
125	D-31924F	D-31925F	Shoe Box
	D-30039		Dowel Pin
	D-33409		Screw for D-31924F
	D-31692		Screw for D-31925F
	D-31832F		Shoe Box Center Piece
	D-31689		Shoe Box Center Piece Pin
126	D-37038A		Shoe Spring Crank Arm Assembly
127	D-37039A		Shoe Spring Crank Assembly
	D-31697		Shoe Crank Spindle Nut
	D-1020-F		
128	D-33405		Shoe Pin
	D-34891		Shoe Pin Set Screw
	D-1014		Cotter Pin
129	D-36492A		Shoe Spring Assembly
130	D-33871	D-31854	Shoe Link
	D-33730		Link Screw (Upper)
131	D-30601		Link Washer
	D-30520		Link Washer Screw

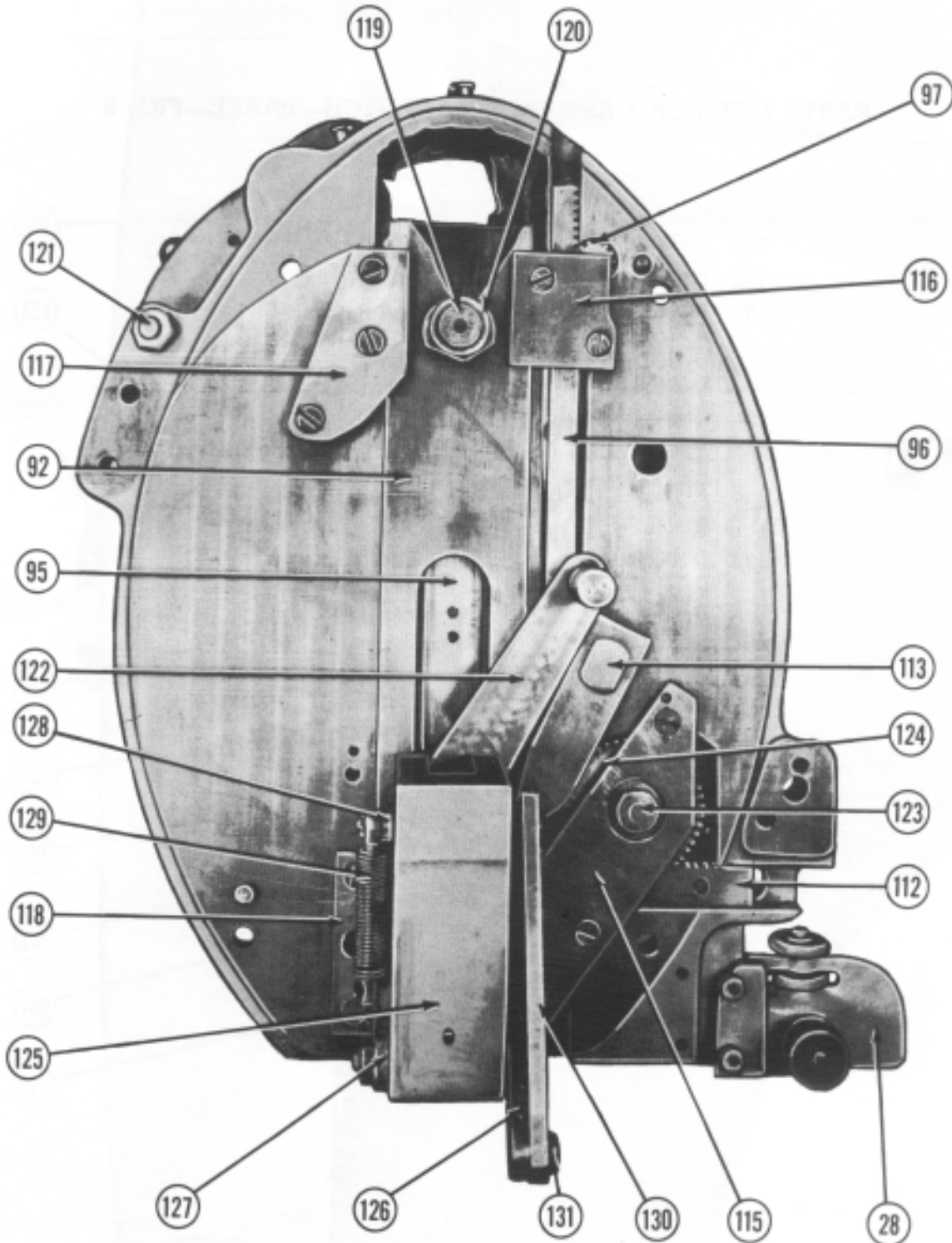


FIG. 5—FACEPLATE (REAR VIEW)

PARTS LIST FOR CAM—SHAFT—CLUTCH—BRAKE—FIG. 6

Index No.	Part No. N3B-2	Part No. N3B-2½	Part Name
132	C-8872A	C-8871A	Cam, Shaft Assembly
133	D-30655F		Fly-Wheel Retaining Collar
	D-30558		Gits Oiler
134	D-33859		Clutch Face
	D-30649		Clutch Face Screw
	D-30604		Clutch Face Pin
135	D-31844		Clutch Bolt
	D-31841		Clutch Bolt Spring
136	D-33860		Brake Strap
	D-38884-F		Adjusting Screw Bracket
	D-26595-F		Set Screw
137	D-31833		Brake Spring
138	D-37209A		Clutch Throwout Shaft Assby
139	D-31889		Clutch Throwout
	D-30607		Clutch Throwout Screw
140	D-37211A		Clincher Cam Push Rod Assby
141	D-31843		Clincher Cam Roller
	D-30233		Roller Stud
142	D-36983A		Clutch Collar Assby
	CB-835-H		Roll Pin
	D-33858		Spring Stop

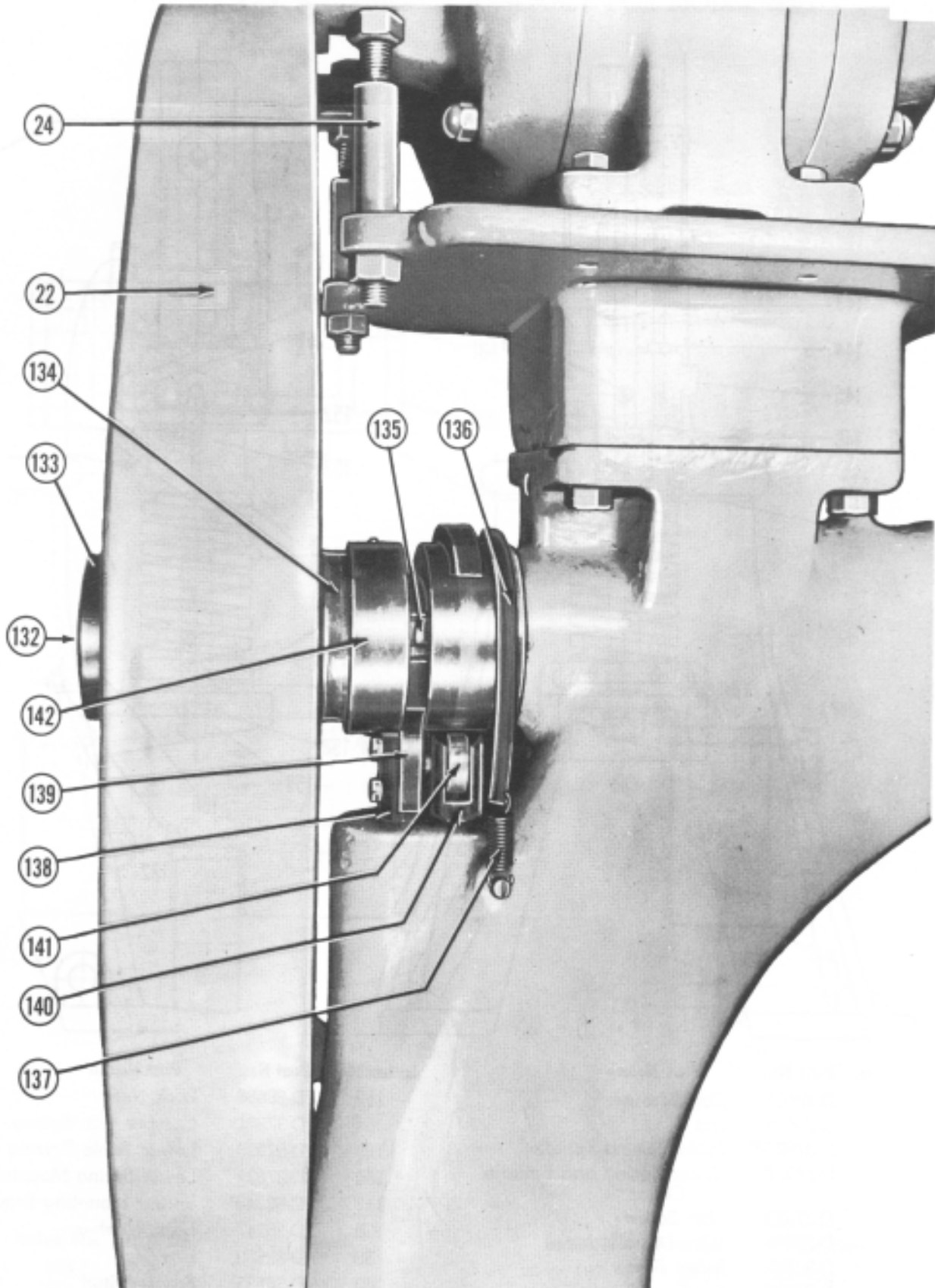
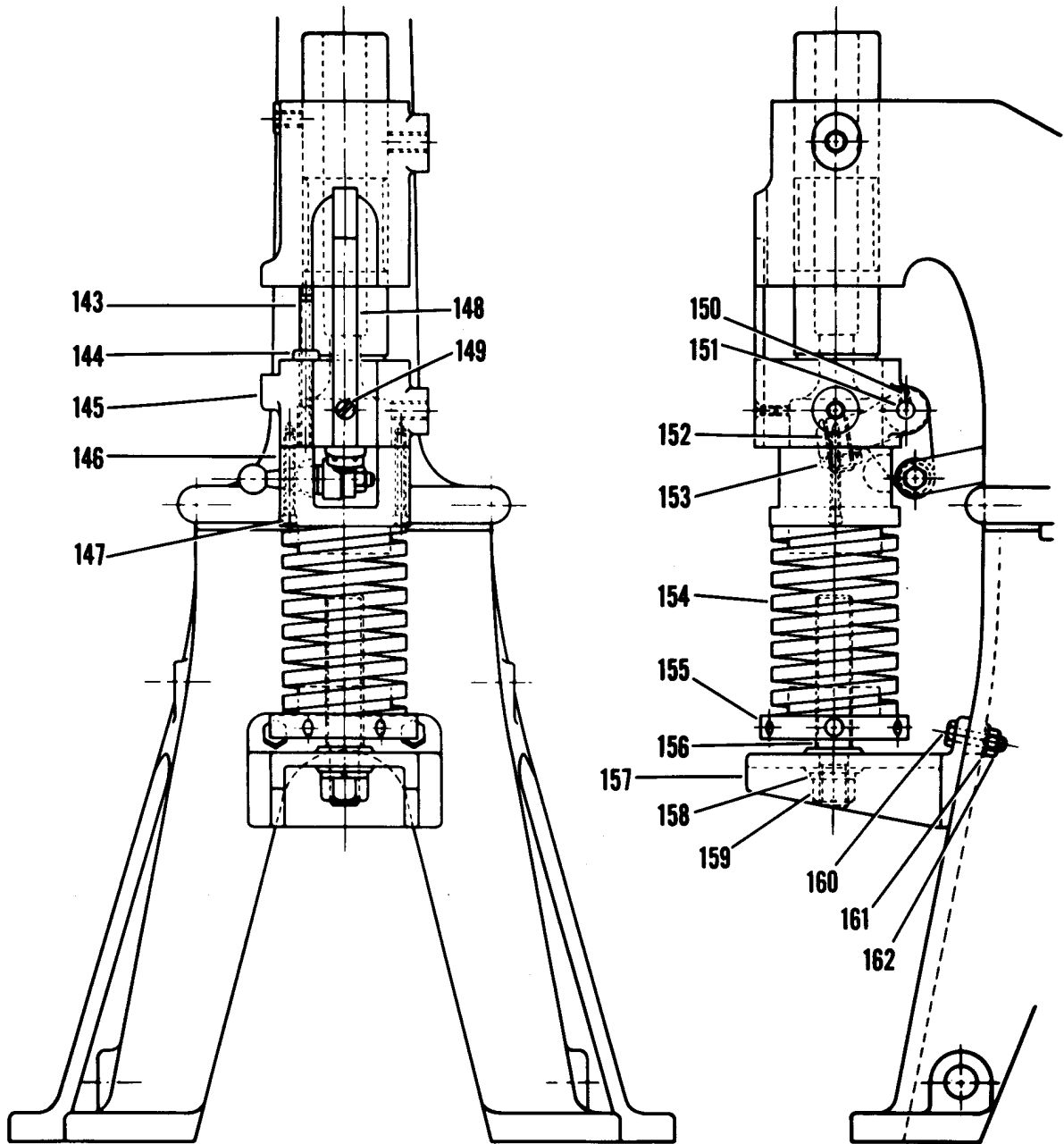


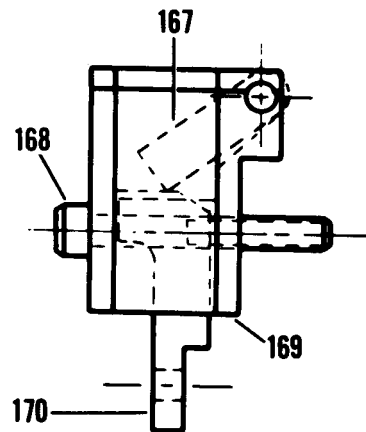
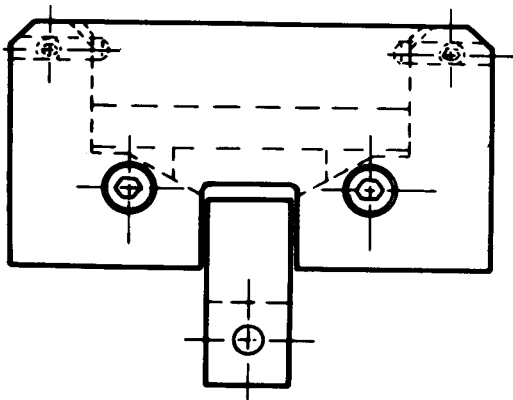
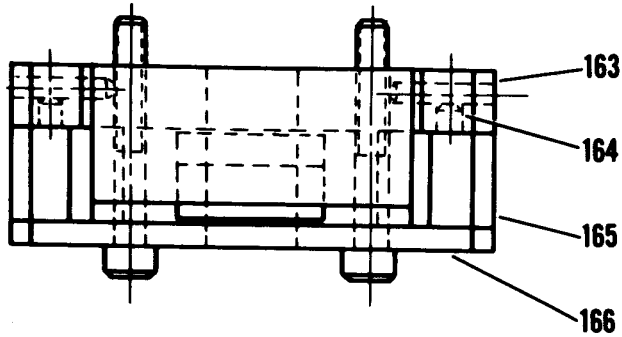
FIG. 6—CAM—SHAFT—CLUTCH—BRAKE

FIG. 7—SPRING MOUNTED SPINDLE ASSEMBLY FOR MODEL N3D



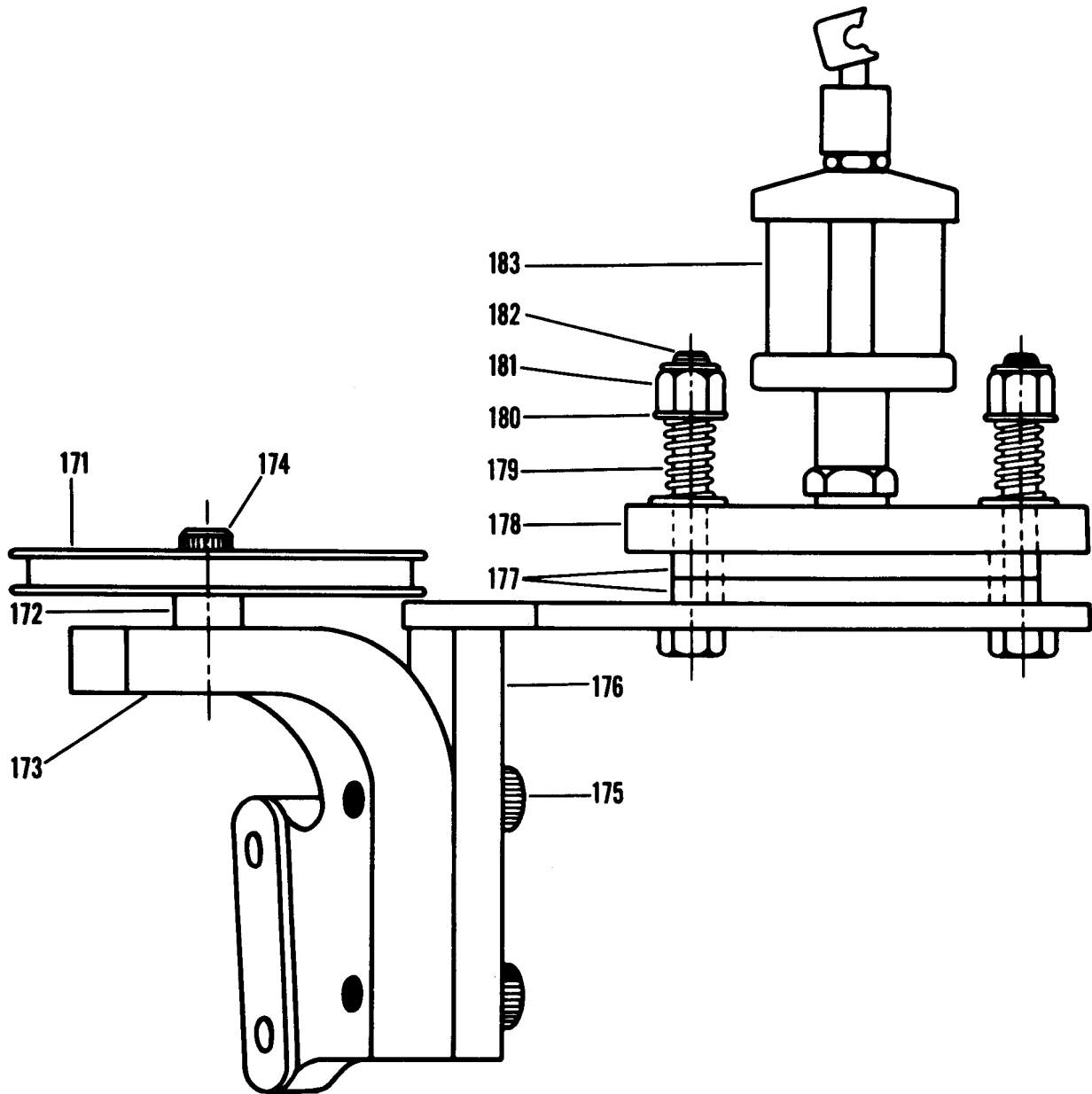
Index No.	Part No.	Part Name	Index No.	Part No.	Part Name
143	D-38668	Cap Screw	153	D-38686	Lock Nut
144	D-30575	Nut	154	D-37921	Compression Spring
145	D-37926-F	Table Raising Spindle	155	D-37920	Lower Table Raising Collar
146	D-37927	Upper Spring and Spindle Collar	156	D-37922	Lower Spring Mounting Stud
147	D-37928	Cap Screw	157	C-9024-F	Spring Mounting Bracket
148	D-33896	Wire Draw Index	158	D-36247	Lock Washer
149	D-30897	Index Screw	159	D-32980	Hex Nut
150	D-30508	Set Screw	160	D-30535	Bracket Stud
151	D-30076	Outer Crank Pin	161	D-3064	Lock Washer
152	D-33874	Clincher Crank Screw	162	D-3080	Nut

FIG. 8—CLINCHER ASSEMBLY FOR MODEL N3D



Index No.	Part No.	Part Name	Index No.	Part No.	Part Name
163	D-37327	Pin	167	D-38661	Clincher
164	D-32979	Set Screw	168	D-30528	Cap Screw
165	D-38660	Side Piece	169	D-38663	Rear Plate
166	D-38659	Front Plate	170	D-38662	Lifter

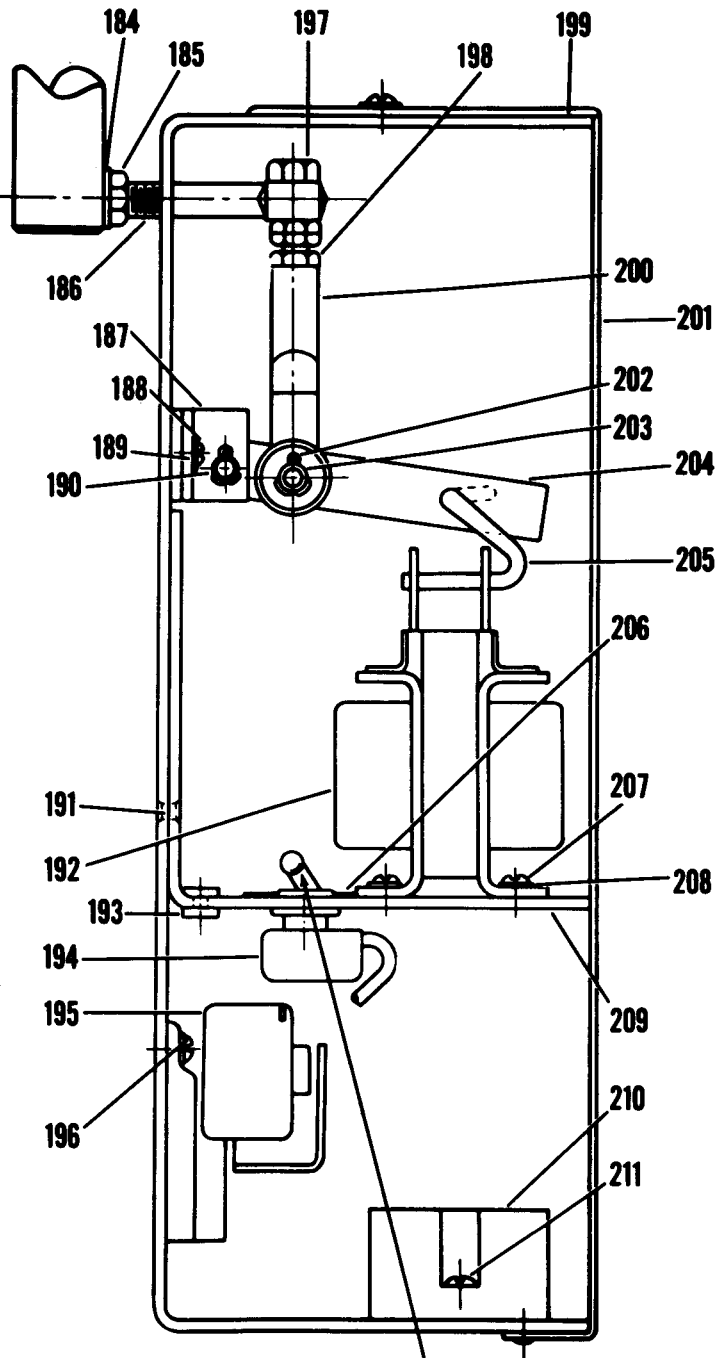
FIG. 9—WIRE GUIDE & OILER ASSEMBLY FOR MODEL N3D



Index No.	Part No.	Part Name	Index No.	Part No.	Part Name
171	D-24872	Pulley	178	D-38666	Wire Wiper Top Plate
172	D-5335	Washer	179	D-30480	Spring
173	C-9207-F	Mounting Bracket	180	D-5335	Washer
174	D14159	Stud	181	D-26096	Nut
175	D-14337	Cap Screw	182	D-25436	Cap Screw
176	C-9208-A	Wire Wiper Bracket	183	D-32116	Oiler
177	D-38667	Oil Wipe Pad			

**FIG. 10—SOLENOID TRIP MECHANISM FOR MODEL N3D
NOT USED ON N3B MECHANICAL ACTIVATION**

Index No.	Part No.	Part Name
184	D-3064	Lock Washer
185	D-7849	Jam Nut
186	D-32130	Trip Rod Stud
187	D-37006-A	Trip Rod Bracket Assembly
188	D-1021	Screw
189	D-7951	Lock Washer
190	D-38086	Lever Roll Pin
191	D-32124	Rivet
192	Specify	Solenoid
	Power	
	Course	
193	D-37199	Rubber Grommet
194	D-32132	Toggle Switch
195	Specify	Magnetic Contactor
	Power	
	Course	
196	D-3196	Screw
197	D-32131-F	Solenoid Trip Bolt
198	D-7403	Jam Nut
199	B-6153	Switch Box
200	D-30762-F	Yoke
201	B-6152	Switch Box Cover
202	D-14531	Cotter Pin
203	D-31955	Yoke Pin
204	D-31982	Trip Rod Lever
205	D-37611	Connecting Link
206	D-32133	Indicating Plate
207	D-32125	Screw
208	D-14267	Lock Washer
209	B-6145-A	Bracket Assembly
210	D-33030	Terminal Block
211	D-32129	Screw

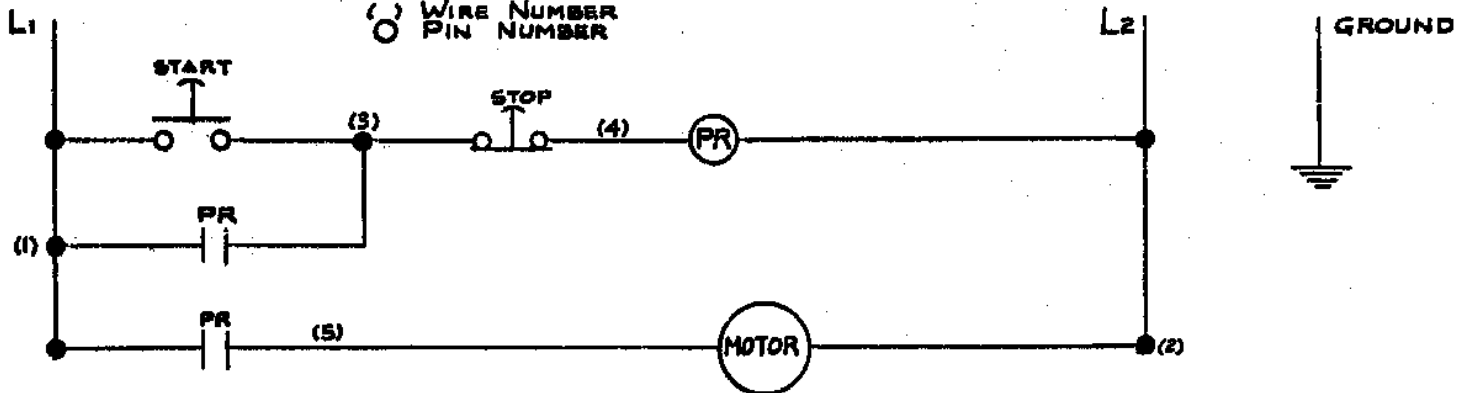


When switch is in "off" position, only one stitch will be driven per treadle operation.

When switch is in "on" position, stitches are driven continuously while treadle is depressed.

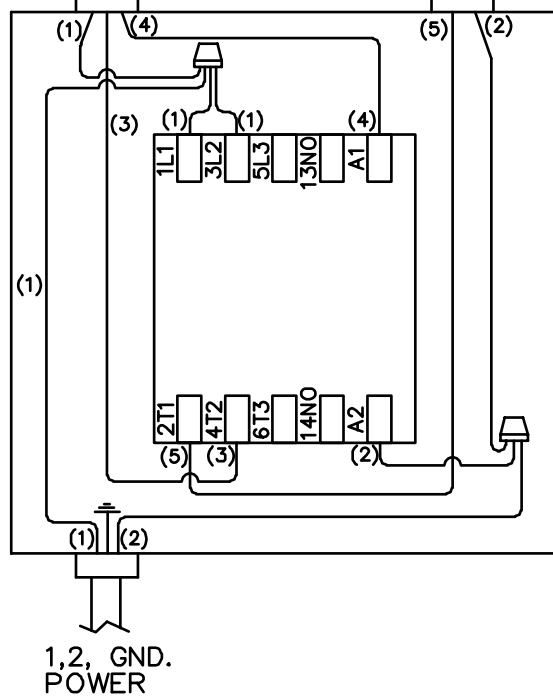
115 VOLTS, 60 HZ, 1 PHASE 230 VAC / 50 Hz

() WIRE NUMBER
 ○ PIN NUMBER

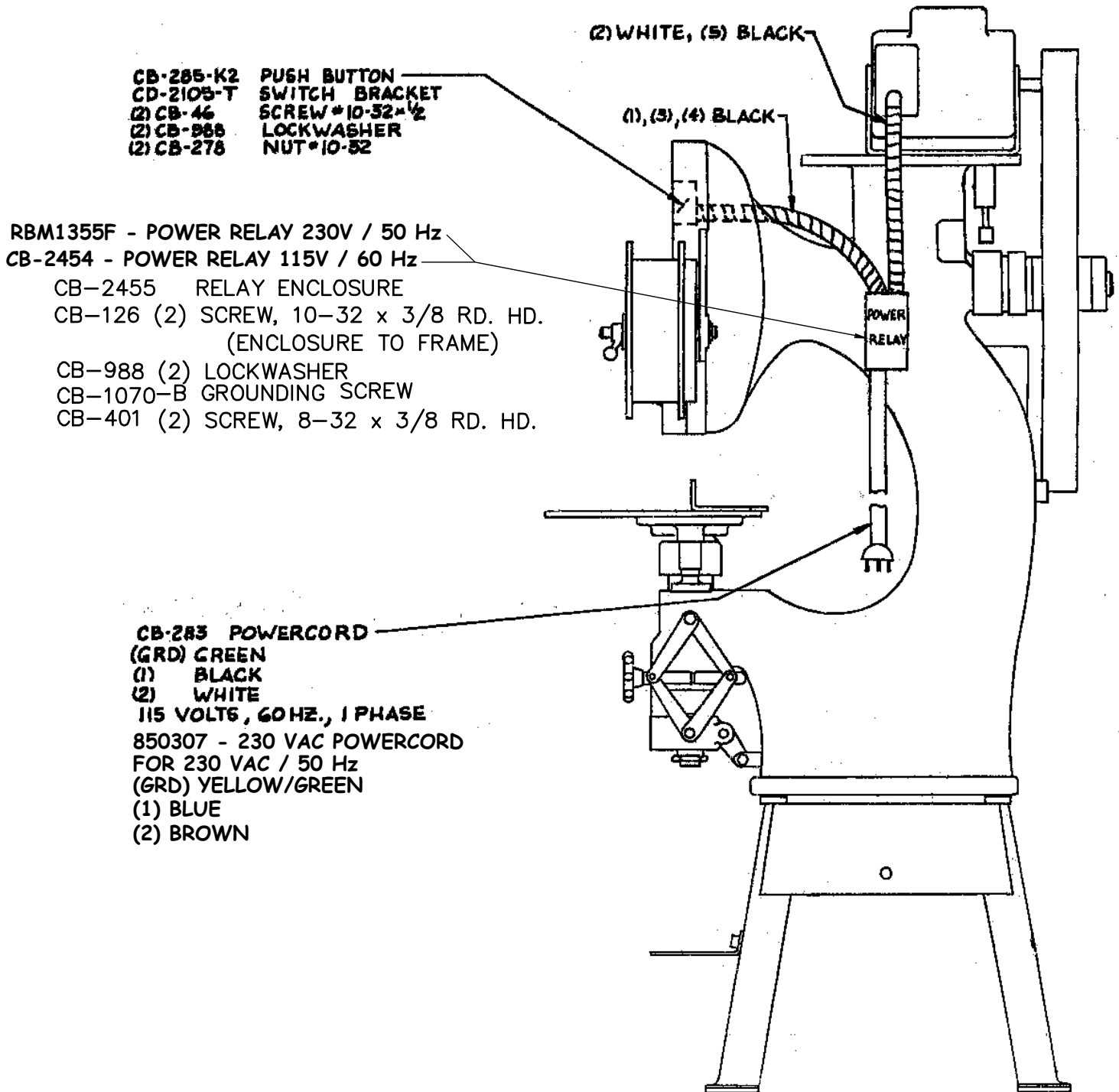


TO PUSH BUTTON
 1,3,4

TO MOTOR
 2,5,6



POWER RELAY
 RBM1355 - 230 V/50 Hz
 CB2454 - 115V/60 Hz



- CB-285-K2 PUSH BUTTON
- CD-2105-T SWITCH BRACKET
- (2) CB-46 SCREW #10-32 x 1/2
- (2) CB-988 LOCKWASHER
- (2) CB-278 NUT #10-52

- RBM1355F - POWER RELAY 230V / 50 Hz
- CB-2454 - POWER RELAY 115V / 60 Hz
- CB-2455 RELAY ENCLOSURE
- CB-126 (2) SCREW, 10-32 x 3/8 RD. HD. (ENCLOSURE TO FRAME)
- CB-988 (2) LOCKWASHER
- CB-1070-B GROUNDING SCREW
- CB-401 (2) SCREW, 8-32 x 3/8 RD. HD.

- CB-283 POWERCORD
- (GRD) GREEN
- (1) BLACK
- (2) WHITE
- 115 VOLTS, 60HZ., 1 PHASE
- 850307 - 230 VAC POWERCORD
- FOR 230 VAC / 50 Hz
- (GRD) YELLOW/GREEN
- (1) BLUE
- (2) BROWN

REGISTRATION

To better service your wire stitching needs, please take a moment to fill out and return this registration card.

Name : _____
(First) (Middle Initial) (Last)
Company : _____
Street Address : _____
City : _____ State/Province : _____ Zip : _____
Country : _____
Phone : _____ Fax : _____ E-mail : _____

CUSTOMER

Machine(s) Purchased : _____
Serial Number(s) : _____
With Head(s) : _____
(Type/Quantity Purchased)
Serial Number(s) : _____
Head(s) Purchased : _____
Serial Number(s) : _____

PRODUCT

Date Received : _____
Dealer Name : _____
Dealer Street Address : _____
City : _____ State/Province : _____ Zip : _____
Country : _____
Dealer Phone : _____

DEALER

Other Bindery Products Used : _____

Please take a moment to fill out the attached card and mail it to DeLuxe Stitcher Company, Inc..
In addition, duplicate the information for your records to assist when making further inquiries.

PRODUCT

Machine(s) Purchased : _____
Serial Number(s) : _____
With Head(s) : _____
(Type/Quantity Purchased)
Serial Number(s) : _____
Head(s) Purchased : _____
Serial Number(s) : _____

DELUXE STITCHER GRAPHIC ARTS REPRESENTATIVE

Date Received : _____
Dealer Name : _____
Dealer Street Address : _____
City : _____ State/Province : _____ Zip : _____
Country : _____
Dealer Phone : _____

Would you like information sent to you about new products that would benefit your company? Yes No

Common Replacement

Below is a list of the most common wear/replacement parts for the StitchMaster. This guide should help you when ordering replacement parts. If the part you need is not listed below, please refer to the more detailed parts list on pages 38-40 in this manual.

Description	Item Number
Clincher Points	CA9083A
Driver	CA9009
Grip	CA9015
Grip Retaining Clip	CA9023
Grip Retaining Screw	9024
Bender Bar Latch	CA9014
Grip Spring	CA9019B
Grip Spring Retaining Screw	9020
Swivel Operating Spring	9046A
Swivel	CAA9038M
Wire Cutter	9048
Motor Brush Assembly	PG10289
Driver Bar	9012A
Clincher Plate	9800A
Supporter - 1/2"	9026A

**PLACE
STAMP
HERE**

DELUXE STITCHER
COMPANY, INC.
 3747 N. Acorn Lane
 Franklin Park, IL 60131.
 Attn: Customer Service

NOTES:



L i m i t e d

DeLuxe Stitcher Company warrants to the original retail purchaser that this product is free from defects in material and workmanship and agrees to repair or replace, at *DeLuxe Stitcher's* option, any defective product within 90 days from the date of purchase. This warranty is not transferable. It covers damage resulting only from defects in material or workmanship and does not cover conditions or malfunctions resulting from normal wear, neglect, abuse or accident.

This warranty is in lieu of all other express warranties. Any warranty of merchantability or fitness for a particular purpose is limited to the duration of this warranty. *DeLuxe Stitcher* shall not be liable for any incidental or consequential damages.

Some states do not allow limitations on how long an implied warranty lasts, or the exclusion or limitation of incidental or consequential damages, so the above limitations or exclusions may not apply to you. This warranty gives you specific legal rights and you may also have other rights which vary from state to state.

To obtain warranty service you must return the product, at your expense, together with proof of purchase to an authorized *DeLuxe Stitcher Company* Graphic Arts Dealer.

Always use genuine *DeLuxe Stitcher* parts. When ordering parts, please identify the part number, the part name, the wire size and crown size of your *Stitcher*.

DeLuxe Stitcher Company, Inc.
3747 N. Acorn Lane
Franklin Park, Illinois 60131
Phone: 847-455-4400 800-634-0810



W a r r a n t y



COMPANY INC.

solving your wire stitching needs for 125 years...

ISP Stitching & Bindery Products

3747 Acorn Lane • Franklin Park • Illinois 60131
Phone: 847-455-4400 • 800-634-0810
Fax: 847-455-4900 • 800-417-9251
<http://www.deluxestitcher.com>