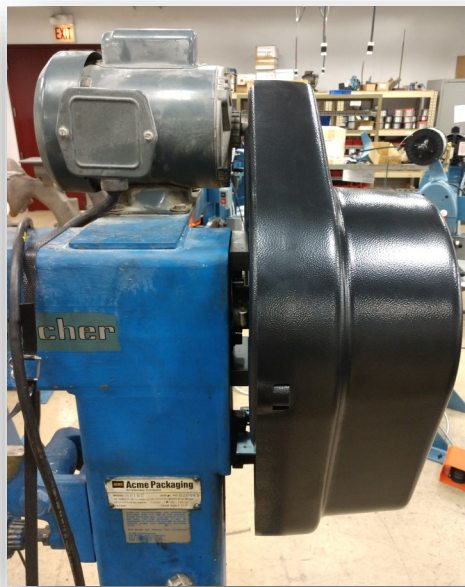
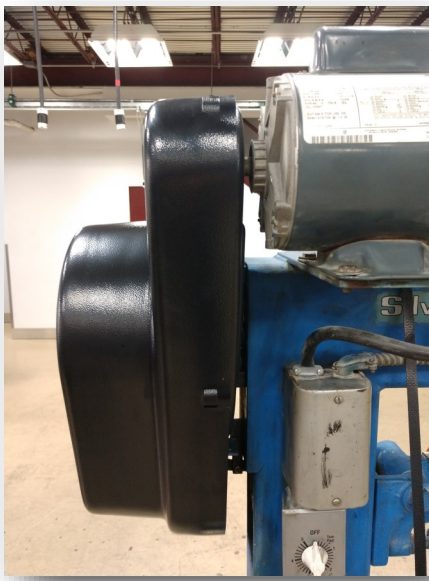




Upgrade your existing HF Belt Guard Cover Assembly to meet today's safety standards. Our complete Belt Guard Kit has full flywheel coverage. This upgrade works on all models & styles of the HF & S5F machines for safer operation. Covers all pinch points, keeps clutch clean, and is easy to install. Made from ABS, **CBB2021C** Kit includes front and rear guard plus all necessary hardware.

New Complete Belt Guard Kit Part # CBB2021C



Aluminum Belt Guard Cover Assembly

